



REC'D #: 754588
 RECORDED 6/5/2019 AT 3:33 PM BK# 2624 PG# 257
 Debra K. Lee, CLERK OF LARAMIE COUNTY, WY PAGE 1 OF 1

STATE OF WYOMING CORNER RECORD

(In compliance with the CORNER PERPETUATION AND FILING ACT, Wyoming Statutes, 1997 Section 33-29-140, et. seq., and the Rules and Regulations of the Board of Registrations for Professional Engineers and Professional Land Surveyors)

WEST QUARTER CORNER SECTION 09, T. 17 N., R. 62 W., 6TH P.M., LARAMIE COUNTY, WYOMING

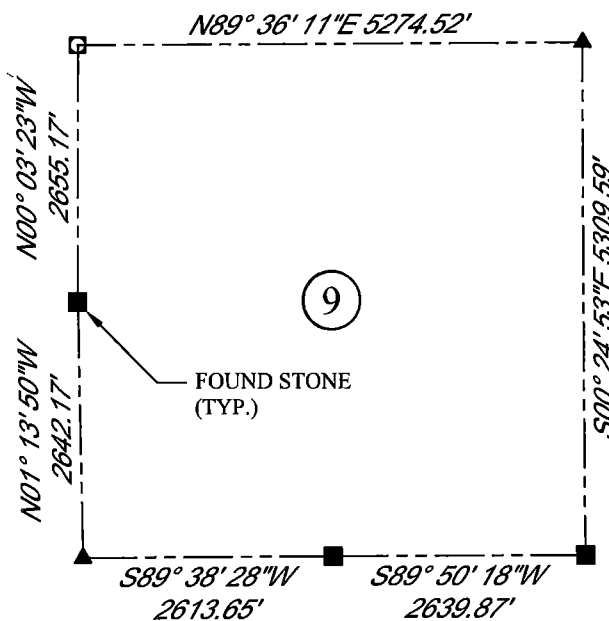
GLO: LIMESTONE 16X12X4 IS 10IN DEEP MARKED 1/4 ON NORTH SIDE FOR 1/4 SEC COR.

FOUND: SEMI-SET LIMESTONE (10X9X5). NO APPARENT MARKS.

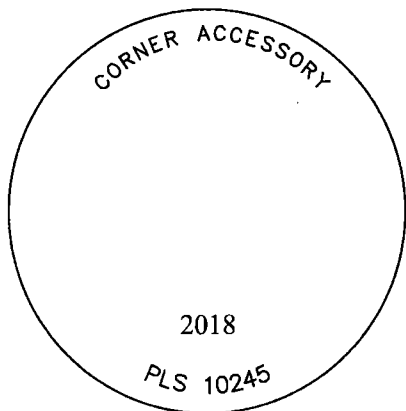
SET: 3.25" ALUMINUM CAP ON #5 REBAR, 4" ABOVE SURFACE, MARKED AS SHOWN ON WEST SIDE OF LIMESTONE. FIRMLY SET. SET A FIBERGLASS ROD ON NORTH SIDE.



SCALE: NONE
 NORTH DETERMINED BY
 G.P.S OBSERVATIONS



SET 3.25" ALUMINUM CAP, STAMPED AS SHOWN



LEGEND:

- FOUND BLM CAP
- FOUND USFS CAP
- FOUND STONE
- FOUND PRIVATE MONUMENT
- ◇ CALCULATED POSITION
- ▲ SET MONUMENT (LS10245)
- SECTION LINE

DATE OF FIELD WORK: 10/08/2018 OFFICE REFERENCE: MERIDEN

CROSS INDEX DIAGRAM

	1	2	3	4	5	6	7	8	9	10	11	12	13	14	15	16	17	18	19	20	21	22	23	24	25
A																									
B																									
C		6		5		4		3		2		1													
D																									
E																									
F																									
G		7		8		●	9	10		11		12													
H																									
J																									
K																									
L		18		17		16		15		14		13													
M																									
N																									
O																									
P		19		20		21		22		23		24													
Q																									
R																									
S																									
T		30		29		28		27		26		25													
U																									
V																									
W																									
X		31		32		33		34		35		36													
Y																									
Z																									

WOOD
 2615 AVIATION DRIVE
 SHERIDAN, WY 82801
 PH: 307-675-6400



THIS CORNER RECORD WAS
 PREPARED BY ME OR UNDER
 MY DIRECTION AND
 SUPERVISION,
 SEAL AND SIGNATURE

